

**Prostate Specific Antigen (PSA) Antibody - With BSA and Azide**  
**Mouse Monoclonal Antibody [Clone SPM352 ]**  
**Catalog # AH10527**

**Specification**

---

**Prostate Specific Antigen (PSA) Antibody - With BSA and Azide - Product Information**

Application	IHC-P, IF, FC
Primary Accession	<a href="#">P07288</a>
Other Accession	<a href="#">354</a> , <a href="#">171995</a>
Reactivity	Human
Host	Mouse
Clonality	Monoclonal
Isotype	Mouse / IgG1, kappa
Calculated MW	33-34kDa KDa

**Prostate Specific Antigen (PSA) Antibody - With BSA and Azide - Additional Information**

**Gene ID** 354

**Other Names**

Prostate-specific antigen, PSA, 3.4.21.77, Gamma-seminoprotein, Semin, Kallikrein-3, P-30 antigen, Semenogelase, KLK3, APS

**Application Note**

IHC-P ~ N/A  
IF ~ 1:50 ~ 200  
FC ~ 1:10 ~ 50

**Format**

200ug/ml of Ab purified from Bioreactor Concentrate by Protein A/G. Prepared in 10mM PBS with 0.05% BSA & 0.05% azide. Also available WITHOUT BSA & azide at 1.0mg/ml.

**Storage**

Store at 2 to 8°C. Antibody is stable for 24 months.

**Precautions**

Prostate Specific Antigen (PSA) Antibody - With BSA and Azide is for research use only and not for use in diagnostic or therapeutic procedures.

**Prostate Specific Antigen (PSA) Antibody - With BSA and Azide - Protein Information**

**Name** KLK3

**Synonyms** APS

**Function**

Hydrolyzes semenogelin-1 thus leading to the liquefaction of the seminal coagulum.

**Cellular Location**

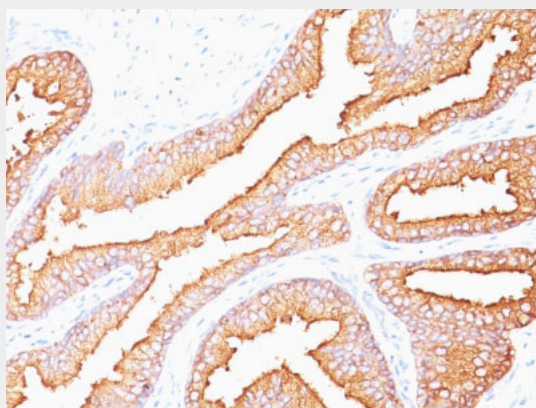
Secreted.

### **Prostate Specific Antigen (PSA) Antibody - With BSA and Azide - Protocols**

Provided below are standard protocols that you may find useful for product applications.

- [Western Blot](#)
- [Blocking Peptides](#)
- [Dot Blot](#)
- [Immunohistochemistry](#)
- [Immunofluorescence](#)
- [Immunoprecipitation](#)
- [Flow Cytometry](#)
- [Cell Culture](#)

### **Prostate Specific Antigen (PSA) Antibody - With BSA and Azide - Images**



Formalin-fixed, paraffin-embedded human Prostate Carcinoma stained with PSA Monoclonal Antibody (SPM352).

### **Prostate Specific Antigen (PSA) Antibody - With BSA and Azide - Background**

Recognizes a single protein of 33-34kDa, identified as the prostate specific antigen (PSA). This MAb is highly specific to PSA and stains prostatic secretory and ductal epithelium in both normal and neoplastic tissues. PSA is a chymotrypsin-like serine protease (kallikrein family) exclusively produced by the prostate epithelium, and abundant in seminal fluid. PSA can be detected in the sera of patients with prostatic carcinoma. It is predominantly complexed to a liver-derived serine protease inhibitor, alpha-1-antichymotrypsin (ACT). A higher proportion of serum PSA is complexed to ACT in prostate cancer than in benign prostate hyperplasia.

### **Prostate Specific Antigen (PSA) Antibody - With BSA and Azide - References**

ISOBM TD-3 Workshop, Tum. Biol. 20 (S1), pp 1-94, Eds. Rye P.D. et al. (1999)